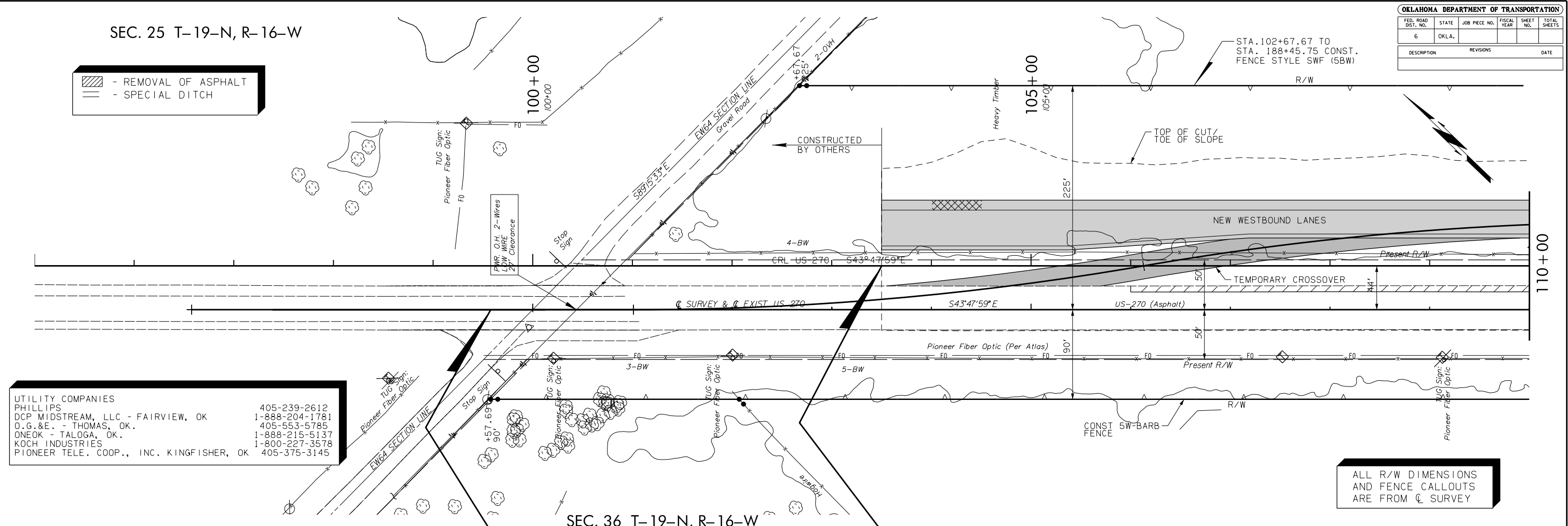


SEC. 25 T-19-N, R-16-W

OKLAHOMA DEPARTMENT OF TRANSPORTATION					
FED. ROAD DIST. NO.	STATE	JOB PIECE NO.	FISCAL YEAR	SHEET NO.	TOTAL SHEETS
6	OKLA.				
DESCRIPTION		REVISIONS	DATE		

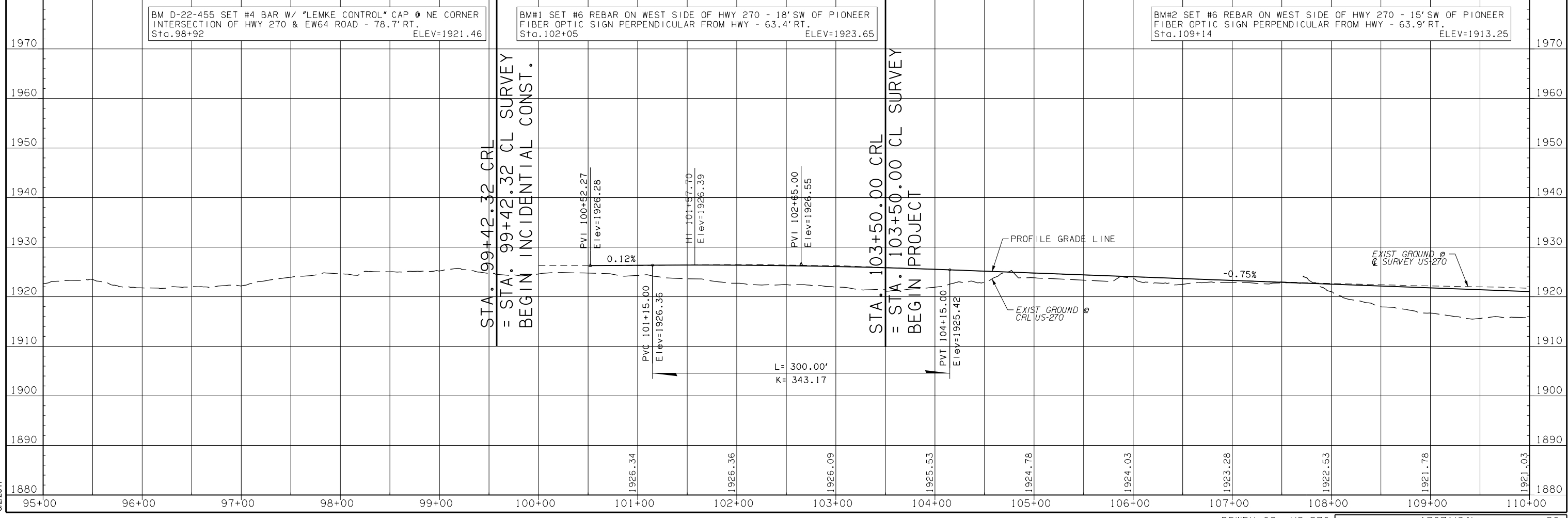
- REMOVAL OF ASPHALT
- SPECIAL DITCH



UTILITY COMPANIES	
PHILLIPS	405-239-2612
DCP MIDSTREAM, LLC - FAIRVIEW, OK	1-888-204-1781
O.G.&E. - THOMAS, OK.	405-553-5785
ONEOK - TALOGA, OK.	1-888-215-5137
KOCH INDUSTRIES	1-800-227-3578
PIONEER TELE. COOP., INC. KINGFISHER, OK	405-375-3145

ALL R/W DIMENSIONS AND FENCE CALLOUTS ARE FROM  $\phi$  SURVEY

SEC. 36 T-19-N, R-16-W



BM D-22-455 SET #4 BAR W/ "LEMKE CONTROL" CAP @ NE CORNER INTERSECTION OF HWY 270 & EW64 ROAD - 78.7' RT. Sta. 98+92 ELEV=1921.46

BM#1 SET #6 REBAR ON WEST SIDE OF HWY 270 - 18' SW OF PIONEER FIBER OPTIC SIGN PERPENDICULAR FROM HWY - 63.4' RT. Sta. 102+05 ELEV=1923.65

BM#2 SET #6 REBAR ON WEST SIDE OF HWY 270 - 15' SW OF PIONEER FIBER OPTIC SIGN PERPENDICULAR FROM HWY - 63.9' RT. Sta. 109+14 ELEV=1913.25

STA. 99+42.32 CRL = STA. 99+42.32 CL SURVEY BEGIN INCIDENTAL CONST.

STA. 103+50.00 CRL = STA. 103+50.00 CL SURVEY BEGIN PROJECT

8/2/2017